



**Size:** UK 10/12 (14/16) – US 6/8 (10/12)  
EU 36/38 (40/42)

**Note:** figures in brackets ( ) refer to larger size. Where only one figure is given this refers to both sizes.

**Skill Level:** advanced

**How much yarn:** 16 (19) balls (each ball 50g and 90m) of Maxi Soft yarn (100% Extrafine Merino Wool) shade no. 8433

**Needles:** A pair of 5.50mm knitting needles  
A 5.50mm spare needle

**Sewing needle:** Yarn needle with rounded point

## STITCHES

**Using needles:** K1, P1 rib – STOCKING STITCH (ST ST): 1 row K (RS), 1 row P (WS). – REVERSE STOCKING STITCH (REV ST ST): 1 row P (RS), 1 row K (WS).

CARTRIDGE STITCH: (work over any number of sts)

**Rows 1 and 4:** P to end. **Rows 2 and 3:** K to end. Rep these 4 rows throughout.

CABLE AND DIAMOND STITCH: work over 88 sts, following Chart and Key. Rep Motif from 1st row to row indicated on Chart, according to the various Stitches. Work Crossed stitches as follows:

**2 Right Crossed stitches:** slip next st onto Dp needle, on backside, K next st, K1 from Dp needle.

**2 Left Crossed stitches:** slip next st onto Dp needle, on frontside, K next st, K1 from Dp needle.

**3 Right Crossed stitches:** slip next st onto Dp needle, on backside, K next 2 sts, K1 from Dp needle.

**3 Right Crossed stitches A:** slip next st onto Dp needle, on backside, K next 2 sts, P1 from Dp needle.

**3 Left Crossed stitches:** place next 2 sts onto Dp needle, on frontside, K next st, K2 from Dp needle.

**3 Left Crossed stitches A:** place next 2 sts onto Dp needle, on frontside, P next st, K2 from Dp needle.

**4 Right Crossed stitches:** place next 2 sts onto Dp needle, on backside, K next 2 sts, K2 from Dp needle.

**4 Left Crossed stitches:** place next 2 sts onto Dp needle, on frontside, K next 2 sts, K2 from Dp needle.

**6 Right Crossed stitches:** place next 3 sts onto Dp needle, on backside, K next 3 sts, K3 from Dp needle.

**6 Left Crossed stitches:** place next 3 sts onto Dp needle, on frontside, K next 3 sts, K3 from Dp needle.

WRAP AND TURN (W&T) SHORT ROWS: at end of a row, before turning, work until last st remains on left needle, then work a W&T st either on the knit side or on the purl side.

**On the knit side:** with the yarn in front, insert your needle purlwise into the stitch you are going to wrap (in this case, that's the last st of the row); slip the st from left needle to right needle, pull the yarn

around to the back of the work. Slip the stitch back onto the left needle again. There is a little bar (= wrap yarn) at stitch base. Turn work to the wrong side, preparing to work the purl row. Before you start to purl across on the wrong side, tug on the yarn to make sure the wrap around the stitch is snug (but don't pull too tightly, or you'll have a difficult time picking up wrap). On the next row insert right needle under wrap yarn from front to back and place it on left needle, behind the W&T st, passing it over the stitch to hide it as much as possible on RS of the work, then Knit wrap yarn and W&T st together, avoiding holes.

**On the purl side:** with the yarn in back, insert your needle purlwise into the stitch you are going to wrap (in this case, that's the last st of the row); slip the st from left needle to right needle, pull the yarn around to the front of the work. Slip the stitch back onto the left needle again. There is a little bar (= wrap yarn) at stitch base. Turn work. On the next row insert right needle under wrap yarn from back to front and place it on left needle, behind the W&T st, passing it over the stitch to hide it as much as possible on RS of the work, then Purl wrap yarn and W&T st together, avoiding holes.

## TENSIONS

19 sts and 21.5 rows measure 10cm square over Cable and Diamond st with 5.50mm needles.

15 sts and 24 rows measure 10cm square over Cartridge st with 5.50mm needles. Take time to check tensions before starting work: it is essential to work to the stated tensions to achieve success.

## INSTRUCTIONS

**Back:** with 5.50mm needles cast on 91 (99) sts and, for lower border, work 13 rows in K1, P1 rib (= 6cm). Cont to work in Cable and Diamond st, dec 1 st at beg of first row and working on each side 0 (4) sts in st st plus 1 selvedge st. When work measures 46 (50)cm from beg, for armholes cast off 4 sts at beg of next 2 rows, then shape raglans dec on next and every alternate row at each end inside 5 sts in K1, P1 rib (starting and ending with P1): 2 sts twice (3 times) and 1 st 19 (20) times. On RH (right hand) side for dec 2 sts work SK2P (= slip next two sts together as if to knit, knit next st, pass both slipped sts over and for dec 1 st), for dec 1 st work SKIP (= slip 1 st, knit 1 st, pass slipped st over K1); on LH (left hand) side for dec 2 sts work K3tog and for dec 1 st work K2tog. On WS work P1 the rem st after decreasing. When work measures 66 (72)cm from beg, cast off rem 36 (38) sts for neck.

**Front:** with 5.50mm needles cast on 87 (95) sts and work lower border as Back. Cont to work in Cable and Diamond st, following Chart from 3rd stitch, dec 1 st at beg of first row and working on each side 0 (4) sts in st st plus 1 selvedge st. Commence W&T short rows, picking up at each side 4 sts every alternate row 7 (8) times and continue to work all sts. When work measures 30 (34)cm from beg (measured along sides), for armholes cast off 4 sts at beg of next 2 rows, then shape raglans dec 1 st at each end inside 5 sts in K1, P1 rib (starting and ending with P1): 2 sts 4 (5) times and 1 st 15 (16) times. When work measures 50 (56)cm from beg, cast off rem 32 (34) sts for neck.

**Sleeves:** for each Sleeve, using 5.50mm needles cast on 46 (54) sts and, for cuff, work 13 rows in K1, P1 rib (= 6cm). Cont to work in Cable and Diamond st, following Chart from 21st (17th) stitch. Inc 1 st at each side, inside 2 sts, on 5th and every following 8th row 10 times. (To increase, make 1 new st as follows: m1 = pick up horizontal yarn between last

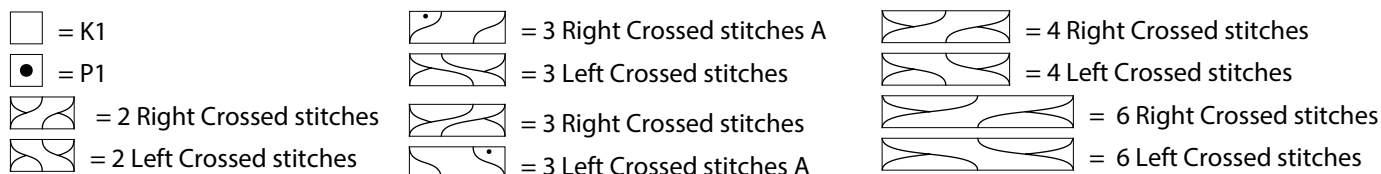
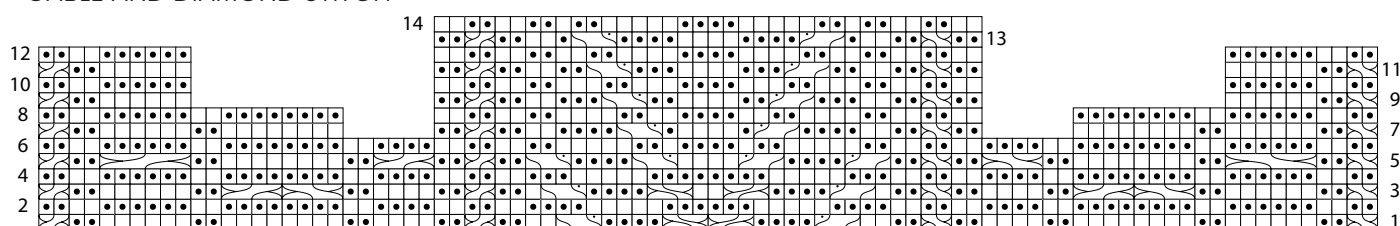
st and next st and knit – or purl – into the back of it). Work increased sts in Cable and Diamond st. When Sleeve measures 39 (43)cm from beg, cont to work in Cartridge st. When Sleeve measures 44 (48)cm from beg, cast off 4 sts at beg of next 2 rows, then shape raglans dec 1 st at each end inside 2 sts in K1, P1 rib on next and every alternate row 17 (19) times, then every following 4th row twice. When Sleeve measures 62 (68)cm from beg, cast off rem 20 (24) sts.

## FINISHING

Sew three raglan seams, excluding Back Right raglan seam. **Ring Collar:** with RS facing and 5.50mm needles, pick up and K 103 (115) sts around Front and Back neckedge. Work 15cm in K1, P1 rib. Cast off. Sew rem raglan and collar seam, considering that Collar will be folded outside on RS for last 10cm. Sew sleeve and side seams.

**Note:** wash jumper carefully at low temperature, with a very little fabric softener. Lay the jumper to dry on a flat surface, without ever hanging it.

## CABLE AND DIAMOND STITCH



Each square corresponds to 1 stitch and 1 row