



## BABY SOFT FANCY DRESS

### MATERIAL

**YARN** = 3 (4; 5; 6) balls x col. 408 of [BABY SOFT FANCY](#) by LAINES DU NORD.

**CIRCULAR NEEDLES** = 4 mm points, 100 cm cables

**OTHERS** = stitch wire with caps (or scrap yarn), darning needle, pins, stitch marker, scissors, tape measure.

### SAMPLE

10 x 10 cm = 22 sts. and 31 r. in stocking st. using size 4 mm knitting needles. For right tension, you can use different size needles.

### MEASURES

**SIZES:** S (M; L; XL)

The picture shows sizes S.

Circumference (top piece): 74 cm

Circumference (lower piece): 100 cm

Height: 85 cm

### POINTS USED

**Rib 1/1 in rounds:** (k1, p1) rep. across the entire r. and every next r., lining up the ribs.

**Stocking stitch in round:** always work on RS. Knit every round.

**Stocking stitch in back-and-forth rows:** knit across r. on RS; purl across r. on WS.

**Open-work stitch in back-and-forth rows:** 10 sts.

following the diagram, rep. the vertical module (from 1st to 8th r.) as many times as necessary. Read the r. on RS from right to left, read the r. on WS from left to right.

**Open-work stitch in round:** like open-work st. in back-and-forth r., working every r. on RS.

**Bind off:** at first work 2 sts. then, \* insert the point of left needle in first of these 2 sts., pass 1st st. over 2nd st. \*, work one st. more and rep. from \* to \*. Continue until you have bound off the stated sts. When you bind off the rib 1/1 sts., work the sts. as they appear.

**Make one:** using the point of the needle, lift the horizontal yarn between 2 sts. and knit it through back loop.

**Sk2p:** slip 1 k-wise, k2tog, pass slipped st. over k2tog.

## NOTES

**SKILL LEVEL:** Intermediate

Work top-down. Place 1 SMb at the end of every round and move it upwards as you work.

## ABBREVIATIONS

**RS** = right side of work  
**WS** = wrong side of work  
**SM** = stitch marker  
**SMb** = beginning stitch marker  
**st. / sts.** = stitch /stitches  
**r.** = row/s  
**incr.** = increase / ing  
**col.** = color  
**k** = knit  
**yo** = yarn over  
**tog.** = together  
**rep.** = repeat  
**p** = purl  
**fol.** = follow / ing

## INSTRUCTIONS

### COLLAR

Using the circular needles with size 4 mm points and 100 cm cable, cast-on 112 (116; 120, 126) sts. 1 st. and close in round, knitting first and last st. tog.

Cont. rib 1/1.

**From 1st to 6th round:** (k1, p1) rep. across the entire r.

Cont. in stocking st.

**7thround:** knit.

**8thround:** (k2tog, yo) rep. across the entire r.

**9th and 10thround:** knit.

Now bind off the sts. for shoulders shaping and continue working 2 pieces separately: top front and top back.

**11thround:** bind off 22 (20, 20, 21) sts. for first shoulder, k34 (38; 40; 42) for back, bind off next 22 (20, 20, 21) sts. for second shoulder, k34 (38; 40; 42) for front.

### TOP FRONT

Leave the sts. of front onto a stitch wire and insert the caps to prevent them from dropping, then work 34 (38; 40; 42) sts. of back using the circular needles in back-and-forth rows.

**1st r. (WS):** k3 (side band), purl until 3 sts. before the end of r., k3 (side band).

**NB:** first and last 3 sts. shape 2 side bands in garter st.

**2nd r. (RS):** k3, 1 incr., knit until 3 sts. before the end of r., 1 incr., k3. [=36 (40; 42; 44) sts.]

**3rd r. (WS):** rep. the 1st r.

**4th f. (RS):** rep. the 2nd r. [=38 (42; 44; 46) sts.]

**5th r. (WS):** rep. the 1st r.

**6th r. (RS):** k3, 1 incr., k11 (13; 14; 15), place 1 SM, 10 sts. in open-work st. foll. the 1st r. of diagram, place 1 SM, K11 (13; 14; 15), 1 incr., k3. [=40 (44; 46; 48) sts.]

**NB:** across next r. move the SM upwards to define the open-work st.

**7th r. (WS):** k3, purl until SM, 10 sts. in open-work st., 1 SM, purl until 3 sts. before the end of r., k3.

**8th r. (RS):** k3, 1 incr., knit until SM, 10 sts. in open-work st., 1 SM, knit until 3 sts. before the end, 1 incr., k3.

Rep. 7th and 8th r. completing the module of diagram in open-work st. (from 1st to 8th r.) 4 times at all. [70 (74; 76; 78) sts.]

End last repetition of open-work st. on WS.

Continue in stocking stitch.

**1st f. (WS):** k3, purl until 3 sts. before the end of r., k3.

**2nd f. (WS):** k3, knit until 3 sts. before the end of r., k3.

Rep. 1st and 2nd r. until completing 8 (12; 18; 22) r., end with 1 r. on WS.

Now there are 78 (86; 94; 100) sts.

## TOP BACK

Pick-up 34 (38; 40; 42) sts. you have left onto stitch wire and work them on WS.

**1st r. (WS):** k3, purl until 3 sts. before the end of r., k3.

**2nd r. (RS):** k3, 1 incr., knit until 3 sts. before the end of r., 1 incr., k3. [=36 (40; 42; 44) m.]

**3rd r. (WS):** rep. the 1st r.

Rep. 1st and 2nd r. 21 (23; 26; 28) times more. [=78 (86; 94; 100) m.]

## BODY OF THE DRESS (FRONT/BACK)

Close the needles in round and work the sts. of front and back at the same time.

**Joining round:** beg. on RS, knit 78 (86; 94; 100) sts. of back, cast-on 4 (6; 8; 10) sts. (armpit), then knit 78 (86; 94; 100) sts. of front reaching the end of r., then cast-on 4 (6; 8; 10) sts. (armpit) and join in knit st. with back [=164 (184; 204; 220) sts.].

Place the SMb in the center of cast-on sts. and 1 SM on the other side. [82 (92; 102; 110) sts., 1 SM, 82 (92; 102; 110) sts.]

**NB:** move the SMb and SM upwards, as you work.

Cont. in round, knitting 30 rounds, then for body shaping, insert the increases as follow:

**\* Round with the increase:** k1, 1 incr., knit until 1 st. before the SM, 1 incr., k1, move the SM, k1, 1 incr., knit until 1 st. before the end of r., 1 incr., k1

Work 8 r. in knit st. \*

Rep. from \* to \* 2 (3; 3; 4) times more.

Work 32 rounds in knit st.

Rep. from \* to \* 9 times more.

Work 10 (14; 18; 18) rounds in knit st.

Now there are 212 (236; 256; 276) sts.

Work 1 round in knit st., incr. 8 (4; 4; 4) sts uniformly. [220 (240; 260; 280) m.]

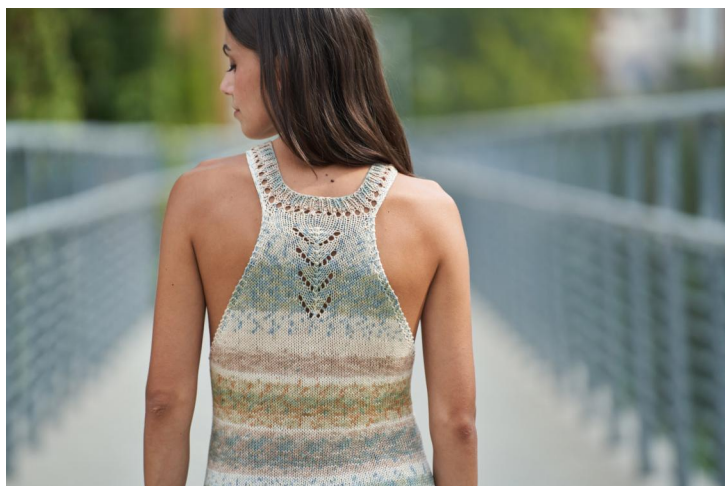
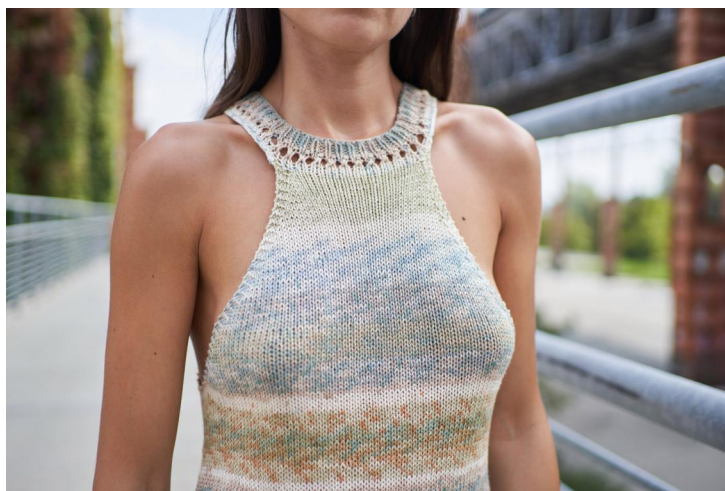
Cont. working 8 rounds in open-work st., rep. the horizontal module (consisting of 10 sts.) 22 (24; 26; 28) times.

Complete the dress working 6 rounds rib 1/1 for lower band and, at last bind off all sts. as they appear.

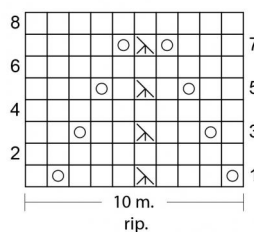
Hide the ends on WS. Wash and block the dress.



## IMAGES



### Punto traforato



### Legenda

- 1 m. a dir. sul LD, 1 m. a rov. sul rov. del lav. (Nel p. traforato in giri, 1 quad. vuoto corrisponde a 1 m. a dir. sempre).
- 1 gettato
- 1 acc. doppia

Lo schema è relativo al p. traforato lavorato in ferri di andata e ritorno.  
I f. sul LD si leggono da destra verso sinistra, mentre i f. sul LR si leggono da sinistra verso destra.  
Seguire lo schema anche per il punto traforato in giri, tenendo presente che tutti i giri si lavorano sul LD.