



## PULL LIFESTYLE

### MATERIAL

**YARN** = "[ARAN TWEED](#)" by "Laines du Nord", 4 balls of color 9 (ocher); 4 balls of color 7 (taupe); 2 balls of color 10 (orange)

**NEEDLES** = 6 mm and 7 mm

**OTHER** = tapestry needle, pins, scissors

### SAMPLE

10 x 10 cm = 16 stitches and 20 rows in stocking st with needles 7 mm

### MEASURES

SIZE: 40/42

### POINTS USED

**2/2 rib st:** ( multiple 4 sts)

1° Rw: (K2, P2) rep to the end.

2° Rw: work sts as they appear

**Stocking st**

1° Rw (RS): K

2° Rw (WS): P

**Seed st:**

1° Rw: (K1, P1) rep to the end

2° Rw (P1, K1) rep to the end

## ABBREVIATIONS

st(s) = Stitch(es)  
Rw = rows  
K = knit  
P = purl  
SE = selvage sts  
RS= right side  
WS= wrong side  
SM = Stitch marker  
rep= repeat

## INSTRUCTIONS

### BACK

With needles 6 mm and color orange cast 78 sts.

Work 6 rows in 2/2 rib st.

Change to needles 7 mm.

Work in seed st for the next 22 cm

**23° Rw (RS):** set up: 2 sts in stocking st. with color ocher, 74 sts in seed st with color orange, 2 sts in stocking st. with color oche

**24° Rw and eve rows (WS):** work as they appear the stitches in stocking st and the other sts in seed st.

**25° - 100° Rw:** follow chart 1, changing colors in stocking st and seed st sections as shown.

**101°-106° Rw:** work all sts in seed st with color taupe.

Now start shaping the neckline.

**107° Rw:** cast off the 27 central sts, and work separately the 2 sides.

**108° Rw and even rows:** work in seed st as set up

**109° Rw:** cast off 4 sts on neck side

**111° Rw:** cast off all sts in seed st.

Repeat the last 4 rows for the other side of the neck.

## FRONT

Work as for the Back until 100° Rw.

Now start shaping neck and shoulders.

**101° Rw:** cast off the 22 central sts and work separately the 2 sides of the neckline.

**102° Rw and even rows:** work in seed st as set up.

**103° Rw:** cast off 3 sts on neckline side

**105° Rw:** cast off 2 sts on neckline side

**107° and 109° Rw:** cast off. 1 st on neckline side

**111° Rw:** cast off all sts in seed st.

Repeat the last 10 rows for the other side.

## SLEEVES

With needles 6 mm and color ocher, cast on 44 sts.

Work 10 rows in 2/2 rib st.

Change to needles 7 mm.

Work in stocking st and at the same increase 1 st each side on rows: 7, 13, 19, 29 and 39.

After the last increase row keep working with color ocher until 50° Rw.

Finish the sleeve following chart 2, change colors in stocking st and seed st sections as shown.

67° Rw: cast off all sts in seed st.

## FINISHING

Sew one shoulder and with needles 6 mm, pick up along the neckline (back and front) 92 sts. Work 5 rows in 2/2 rib st.

6°Rw: cast off all sts as they appear

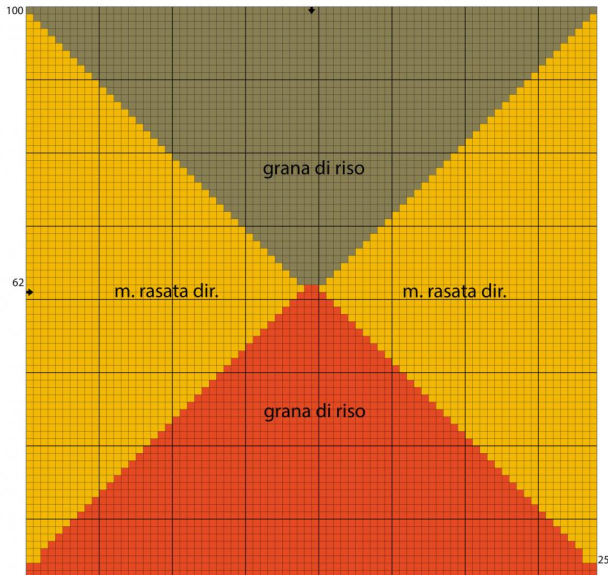
Sew the second shoulder and the neck sides. Sew the sides, leaving the armholes open, then sew sleeves.

## IMAGES

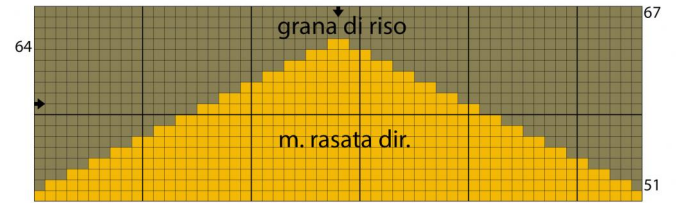
---



Schema 1: lavorazione a 3 colori (davanti e dietro)



Schema 2: lavorazione a 2 colori (maniche)



Legenda

- n.3
- n.10
- n.7