



DOLLY MAXI JACKET

MATERIAL

YARN = [DOLLY MAXI](#) by LAINES DU NORD, Color 1: 6 (6-7) balls, white, Color 2: 7 (7-8) balls, orange
CIRCULAR NEEDLES = 5.5 mm points, 100 and 60 cm cables.

OTHERS = cable needle, darning needle, stitch marker, pins, row counter, scissors, tape measure.

SAMPLE

10 x 10 cm = 19 sts. and 23 r. in stocking st. using 5.5 mm needles.

If required, for right tension, use different size of needles.

MEASURES

S (M-L)

Measures of the cardigan shown by the picture (size M)

Chest circumference: 100 cm

Total height: 67 cm

Side length (from under sleeve to lower band): 46 cm

Sleeves length (from under sleeve to lower band): 48 cm

Circumference of sleeve head: 36 sts.

POINTS USED

Rib Stitch in back-and-forth rows.

1st r.: (k1, p1) rep. across the entire r.

2nd r. and even r.: work the sts. as they appear.

Rib 1/1 in round

1st round and next rounds: (k1, p1) rep. across the

entire r.

Stocking stitch in back-and-forth rows.

1st r. (RS): knit all sts.

2nd r. (WS): purl all sts.

Stocking stitch in round

1st round and next rounds.: knit every st.

2 cables motif: 18 sts. foll. diagram A and rep. from 1st to 10th r., reaching the required length.

Cable crossed to the left: 10 sts. foll. diagram B and rep. from 1st to 10th r. reaching the required length.

Cable crossed to the right: 10 sts. foll. diagram C and rep. from 1st to 10th r. reaching the required length.

Cross 6 sts. to the left: leave 3 sts. onto cable needle and let it hang in front of work, k3, knit 3 sts. off of cable needle.

Cross 6 sts. to the right: leave 3 sts. onto cable needle and let it hang in back of work, k3, knit 3 sts. off of cable needle.

k2tog: insert right needle into first 2 sts. of left needle and knit them together

skp: slip 1 st. k-wise, k1, pass slipped st. over k1.

Binding off: work 2 sts., insert the point of left needle through first of 2 sts. on right needle, pass first st. over second one, * work next st. (on right needle there are 2 sts.), insert the point of left needle through first of these 2 sts., then pass first st. over second one *, rep. from * to * binding off as many times as necessary.

NOTES

Work 2 fronts and back top-down separately, using circular needles in back-and-forth rows. After sewing the side and shoulder seams, work the sleeves in round, beg. from armholes.

SKILL LEVEL: Intermediate

ABBREVIATIONS

RS = right side of work
WS = wrong side of work
SM = stich marker
Smb = stitch marker of the beginning of the round
r. = row(s) / round(s)
st.(s) = stitch(es)
col. = color
decr. = decrease(ing)
k = knit
tog. = together
rep. = repeat
p = purl
fol. = follow(ing)

INSTRUCTIONS

BACK

Using circular needles with 5.5 mm points, 100 cm cable and col.1 yarn, cast-on 84 (92-102) sts. and, for **band** shaping, work 12 r. rib 1/1.

Body

Cont. working the cables motif.

1st r. (RS): k33 (37-42), place 1 SM, 18 sts. for cables motif (diagram A), place 1 SM, k33 (37-42).

2nd r. (WS): p33 (37-42), move the SM, 18 sts. foll. the diagram A, move the SM, p33 (37-42).

Rep. 1st and 2nd r. reaching 41 (41-42) sts. As you work, move the 2 SM upwards.

For **armholes** shaping

1st r. (RS): bind off 4 sts., k1 in every st. until SM, move the SM, 18 sts. foll. the diagram A, k33 (37-42) [80 (88-89) sts.]

2nd r. (WS): bind off 4 sts., p1 in every st. until SM, move the SM, 18 sts. foll. the diagram A, move the SM, p1 in every st. until the end of r. [76 (84-94) sts.]

Cont. working these sts. until the end.

3rd r. (RS): knit until SM, move the SM, 18 sts. foll. the diagram A, move the SM, knit until the end of r.

4th r. (RS): purl until SM, move the SM, 18 sts. foll. the diagram A, move the SM, knit until the end of r.

Rep. 3rd and 4th r. 3 (3-5) times more.

Top part in cable stitch

Using col. 2 work as foll.:

1st r. (RS): k3 (7-12), 18 sts. foll. the diagram A, k8, 18 sts. foll. the diagram A, k8, 18 sts. foll. the diagram A, k3 (7-12).

2nd r. (WS): p3 (7-12), 18 sts. foll. the diagram A, p8, 18 sts. foll. the diagram A, p8, 18 sts. foll. the diagram A, p3 (7-12).

Rep. 1st and 2nd r. 16 (17-18) cm more, approx.

At last, bind off all sts.

RIGHT FRONT

Using circular needles with 5.5 points, 100 cm cable and col.1 yarn, cast-on 42 (46-50) sts. and, for **band** shaping, work 12 r. rib 1/1.

Body

Using col.2, work in cable stitch.

1st r. (RS): k3, place 1 SM, 10 sts. foll. the diagram B, place 1 SM, k4, place 1 SM, 18 sts. foll. the diagram A, place 1 SM, k7 (11-15).

2nd r. (WS): p7 (11-15), move the SM, 18 sts. foll. the diagram A, move the SM, p4, move the SM, 10 sts. foll. the diagram B, move the SM, p3.

Rep. 1st and 2nd r. reaching 41 (41-42) cm. As you work, move the SM upwards.

Shape the **neckline**.

1st r. (RS): k3, move the SM, 10 sts. foll. the diagram B, move the SM, k4, move the SM, 18 sts. foll. the diagram A, move the SM, k7 (11-15).

2nd r. (WS): bind off 4 sts., p1 in every st. until SM, move the SM, 28 sts. foll. the diagram A, move the SM, p4, move the SM, 10 sts. foll. the diagram B, p3.

3rd r. (RS): knit until SM, move the SM, 10 sts. foll. the diagram B, move the SM, k4, move the SM, 18 sts. foll. the diagram A, move the SM, knit until the end of r.

4th r. (RS): purl until SM, move the SM, 18 sts. foll. the diagram A, move the SM, p4, move the SM, 10 sts. foll. the diagram B, move the SM, knit until the end of r.

Rep. 3rd and 4th r. 13 (14-17) times more.

Cont. working **the neckline**.

1st r. (RS): bind off 15 sts. and work the rem sts. foll. the cables pattern.

2nd r. (WS): work the sts. as they appear.

3rd r. (RS): work foll. the pattern.

4th r. (WS): work the sts. as they appear.

Rep. 3rd and 4th r. 8 times more.

NB: work as r. as given for back.

Bind off all sts.

LEFT FRONT

Using circular needles with 5.5 points, 100 cm cable and col.1 yarn, cast-on 42 (46-50) sts. and, for **band** shaping, work 12 r. rib 1/1.

Body

Using col.2, work in cable stitch.

1st r. (RS): k7 (11-15), place 1 SM, 18 sts. foll. the diagram A, place 1 SM, k4, place 1 SM, 10 sts. foll. the diagram C, place 1 SM, k3.

2nd r. (WS): p3, move the SM, 10 sts. foll. the diagram C, move the SM, p4 move the SM, 18 sts. foll. the diagram A, p7 (11-15).

Rep. 1st and 2nd r. reaching 41 (41-42) cm di alt. tot. As you work, move the SM upwards.

Shape the **armhole**.

1st r. (RS): bind off 4 sts., knit until SM, move the SM, 18 sts. foll. the diagram A, move the SM, k4, move the SM, 10 sts. foll. the diagram C, move the SM, k3.

2nd r. (WS): p3, move the SM, 10 sts. foll. the diagram C, move the SM, p4, move the SM, 18 sts. foll. the diagram A, move the SM, purl until the end of r.

3rd r. (RS): knit until SM, move the SM, 18 sts. foll. the diagram A, move the SM, k4, move the SM, 10 sts. foll. the diagram C, move the SM knit until the end of r.

4th r. (RS): purl until SM, move the SM, 10 sts. foll. the diagram C, move the SM, p4, move the SM, 18 sts. foll. the diagram A, move the SM, knit until the end of r.

Rep. 3rd and 4th r. 13 (14-17) times more.

Shape the **neckline**.

1st r. (RS): work foll. the cables pattern.

2nd r. (WS): bind off 15 sts. and work the rem. sts. as they appear. [23 (27-31)]

3rd r. (RS): work foll. the pattern.

4th r. (WS): work the sts. as they appear.

Rep. 3rd and 4th r. 8 times more.

NB: work as r. as given for back.

Bind off all sts.

FINISHING

On WS, join the shoulders, sewing first and last 23 (27-31) sts. of front and back. Sew the side edges of 2 panels.

SLEEVES

Using circular needles with 5.5 mm points, 60 cm cable and col.2 yarn, pick-up and knit 68 (72, 76) sts. around armhole, place SMb and work in round. Move the SM upwards, as you work.

Cont. in stocking st. in round, alternating the colors and decreasing as foll.:

Knit 3 rounds.

Use col.1 yarn.

knit 4 rounds.

Round with decreases: k2tog, knit until 3 sts. before the end, skp, k1.

Knit 11 rounds.

Round with decreases: k2tog, knit until 3 sts. before the end, skp, k1.

Knit 1 round.

Use col.2 yarn.

Knit 28 cm more and, at the same time, work the round with the increases, every 12 rounds (=5 rounds with decreases). [54 (58-62) sts.]

Use col. 1 yarn.

Knit 8 rounds.

Use col. 2 yarn.

Knit 6 rounds.

Use col. 1 yarn.

Knit 1 round.

Round with decreases: knit, decreasing 1 st. 12 (12, 14) times, uniformly.

Complete the sleeve and, for band shaping, work 16 rounds rib 1/1.

At last, bind off all sts. as they appear.

Work the second sleeve like first one.

BAND OF RIGHT FRONT

Using circular needles with 5.5 points, 100 cm cable and col.1 yarn, pick-up 93 (95-101) sts. along the right front edge, then work 11 r. rib 1/1. Bind off all sts. as they appear.

BAND OF LEFT FRONT

Work like band of right front edge.

COLLAR

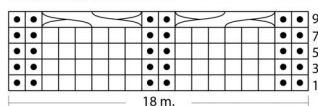
Using circular needles with 5.5 points, 100 cm cable and col.1 yarn, pick-up 108 (110-112) sts. around neckline and work 16 r. rib 1/1. Bind off all sts. as they appear.

Hide the ends, then wash and block the garment according to required measures.

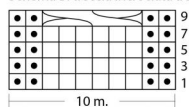
IMAGES



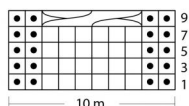
Schema A: motivo a 2 trecce



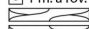

Schema B: treccia incrociata a sinistra



Schema B: treccia incrociata a destra



Legenda

- 1 m. a dir.
- 1 m. a rov.
-  6 m. incrociate a destra
-  6 m. incrociate a sinistra

I f. dispari sul LD, si leggono da destra verso sinistra

Nei f. pari sul LR, non rappresentati nello schema,

lav. le m. come si presentano.

Per ogni schema rip. dal 1° al 10° f. fino a raggiungere la lunghezza necessaria