



ARAN SCHOOL JACKET

MATERIAL

YARN = "[Aran Tweed](#)" by "Laines du Nord" 50/90 m
Color cod 2: 9 (10, 11) balls
NEEDLES = 5 mm
OTHER = stitch markers, tapestry needle, 7 buttons.

SAMPLE

18 stitches and 25 rows = 10 X10 cm in stocking st. with needles 5 mm. Adjust the needles size if it's needed to achieve the correct gauge.

MEASURES

SIZES S (M, L)

MEASURES OF THE FINISHED GARMENT:

Size in photos M
Bust circumference 108 cm
Total length: 53 cm
Length from underarm to hem: 33 cm
Sleeve length: 47 cm
xUpper sleeve circumference: 32 cm

POINTS USED

2/2 rib st.: **Row 1:** * K2, P2* rep ** to the end. **Row 2:** work sts as they appear.

NOTES

Read Charts for bottom up; on RS (odd numbers) read from right to left, on WS (even number) from left to right.

This project is worked back and forth from the top down with raglan sleeves. Use 2 different colors for the 2 types of stitch markers to avoid getting confused.

ABBREVIATIONS

RS = right side;

WS = wrong side;

K = knit;

P = purl;

st(s) = stitch(es);

SM = stitch marker;

SMc = stitch marker that mark the chart;

sSM = slip SM;

K2tog = knit 2 sts together;

SKP = slip 1, K1, pass slipped st. over.

m1 = make one by picking up one a loop between two stitches and knitting into the back of the new stitch.

2/2 rc: (left cable) = Slip 2 stitches on cable needle, hold in back, K2, K2 from cable needle.

2/2 lc: (left cable) = Slip 2 stitches on cable needle, hold in front, K2, K2 from cable needle.

1/1 lc: (left cable) = Slip 1 stitches on cable needle, hold in front, K1, K1 from cable needle.

rep ** = repeat from * to *

INSTRUCTIONS

With needles 5 mm cast on 88 (98, 108) sts. Work back and forth.

Work 2 rows in stocking st.

Place SM as follows:

Row 3 (RS): K14(16, 18) (front), place **SM**, K4, place **SM**, K4(6, 8) (sleeve), place **SM**, K4, place **SM**, K11(12, 13), place **SMc**, K14, place **SMc**, K 11 (12, 13), [back], place **SM**, K4, place **SM**, K4(6, 8) (sleeve), place **SM**, K4, place **SM**, K14 (16, 18) (front).

Row 4 (WS): P to **SM**, sSM, **K1, P2, K1**, sSM, P to **SM**, sSM, **K1, P2, K1**, sSM, P to **SMc**, K2, P4, K2, P4, K2, slip **SMc**, P to **SM**, pMP, **K1, P2, K1**, sSM, P to **SM**, sSM, **K1, P2, K1**, sSM, P to the end.

Start the increases for sleeves, back and fronts as follows:

Row 5 (RS): K to **SM**, m1, sSM, **CHART A**, sSM, m1, K to **SM**, m1, sSM, **CHART A**, sSM, m1, K to **SMc**, **CHART B**, K to **SM**, m1, sSM, **CHART A**, sSM, m1, K to **SM**, m1, sSM, **CHART A**, sSM, m1, K to the end.

(8 sts increased)

Row 6 (WS): P to **SM**, sSM, **CHART A**, sSM, P to **SM**, sSM, **CHART A**, sSM, P to **SMc**, **CHART B**, P to **SM**, sSM, **CHART A**, sSM, P to **SM**, sSM, **CHART A**, sSM, P to the end.

Repeat Rows 5 and 6 another 22 (23, 24) times

[sts on needles: 272 (290, 308)]

Now place the sts for each sleeve onto holder or scrap yarn as follows:

RS: K to **SM**, remove SM, K4, place the next 50 (54, 58) onto holder or scrap yarn (sleeve), cast on 4 (6, 8) sts for underarm, remove SM, K4, remove SM, **K to SM**, remove SM, K4, remove SM, place the next 50 (54, 58) onto holder or scrap yarn (sleeve), cast on 4 (6, 8) sts for underarm, remove SM, K4, remove SM, **K to the end**

WS: P to SMc, **CHART B**, P to the end.

Work the body of the cardigan

Body sts: 180 (194, 208)

Work **20 rows** in **stocking st.** as follows:

RS rows: K to SMc, **SCHEMA B**, K to the end.

WS rows: P to SMc, **SCHEMA B**, P to the end.

Start working CHARTS at sides as follows:

RS rows: K4, **CHART C** (8 sts), K to SMc, **CHART B**, K to 12 sts before end, **CHART D** (8 sts), K4.

WS rows: P4, **CHART D** (8 sts), P to SMc, **CHART B**, P to 12 sts before end, **CHART C** (8 sts), P4.

Continue working this way for the next 28 cm.

Hem

Rows 1 - 16: work in **2/2 rib st.** as follows:

RS: * K2, P2 * rep ** to the end

WS: work sts as they appear.

Cast off all sts.

SLEEVE (X2)

Work in rounds.

Slip the **50 (54, 58)** held stitches from holder to **5 mm** circular needles (using the short cable or DPNs if you prefer); pick up and knit **4 (6, 8)** underarm sts.

Place **SM** in the center of the underarm sts and work in the round. 54 (60, 66) sts.

Round 1: K

Round 2: K2tog, K to the end. 53 (59, 65) sts.

Knit 4 rounds

Decrease round: K1, K2tog, K to 2 sts before end, SKP. 51 (57, 63) sts.

Knit 5 rounds

Decrease round: K1, K2tog, K to 2 sts before end, SKP. 49 (55, 61) sts.

Knit 16 rounds

Decrease round: K1, K2tog, K to 2 sts before end, SKP. 47 (53, 59) sts.

Work in stocking st (K all rounds) until sleeve measures about 30 from underarm.

Next round: K and decrease evenly 7 (9, 11) sts (K2tog).40 (44, 48) sts

Cuff

Rounds 1 - 14: work in 2/2 rib st: *K2, P2* rep ** to the end

Cast off all sts.

Make the second sleeve.

CENTRAL EDGES

Left side

With 5 mm needles pick up and knit 100 (102, 104) sts along the left central edge.

Work 10 rows in 2/2 rib st as follows:

Row 1: *K2, P2* rep ** to the end.

Row 2: work sts as they appear

Cast off all sts,

Right side

With 5 mm needles pick up and knit 100 (102, 104) sts along the right central edge.

Work 10 rows in 2/2 rib st and on Row 3 work 7 buttonholes evenly.

Cast off all sts,

NECK

With 5 mm needles pick up and knit 100 (110, 120) sts along the neck.

Work 18 rows in 2/2 rib st as follows:

Row 1: *K2, P2* rep ** to the end.

Row 2: work sts as they appear

Cast off all sts,

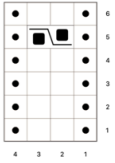
Sew the buttons in correspondence of the buttonholes.

Weave in all ends, wash and block garment carefully.

IMAGES



SCHEMAA



SCHEMAB

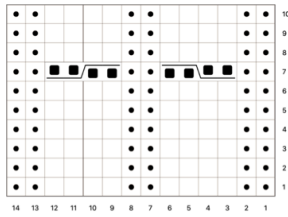


CHART A

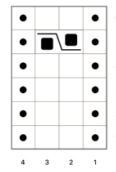
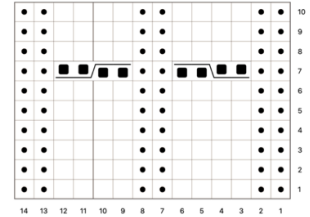
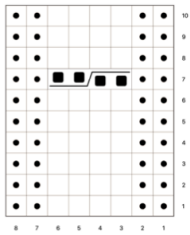


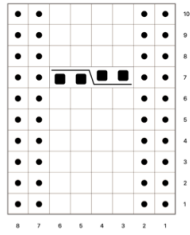
CHART B



SCHEMAC



SCHEMAD



LEGENDA

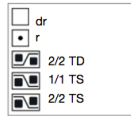


CHART C

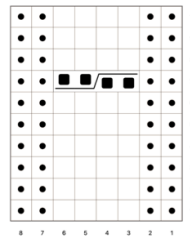
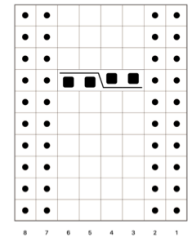


CHART D



KEY

